

**PIXIBAR 48-ID** is a 48 SMD5050 RGB LED pixel bar. This one meter bar provides great color mixing and pixel effects with 16 pixels control and a Dome diffuser cover. It is ideal for linear and grid installations on the wall or ceiling of club, stage and events.

**SOURCE** Light source: SMD5050 RGB LEDs  
LED quantity: 48 LEDs

**OPTICAL SYSTEM** Cover: Dome opal diffuser  
View angle: 120°

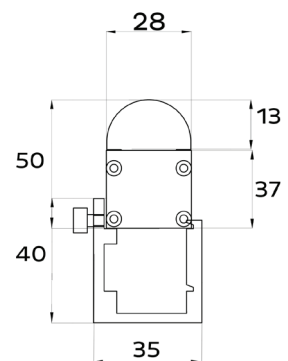
**CONTROL & PROGRAMMING** Pixels control: 16  
Color mixing: RGB  
Control protocols: DMX, 44 FPS  
Control channels: 48 CHs  
Address setting: Manual

**ELECTRICAL** Input voltage: 24V  
Power consumption: 10 watts

**CONNECTIONS** Power and data connection: 15cm 5 pin female and male connection  
Cable entry: Bottom

**PHYSICAL** Dimensions: 1000 x 28 x 50mm (without bracket)  
1000 x 35 x 90mm (with bracket)  
Color: Black  
IP rating: 20  
Operating temperature: -40°C/50°C

## Dimensions



## Connection

